



**CLASS CATALOG**  
**March 2 - March 7, 2020**  
**Williamsburg, Virginia**



For Information Contact:  
 Barbara@academyofapplique.com call : 757-565-5299

## Kingsmill Resort, 1010 Kingsmill Road, Williamsburg, Virginia, 23185

The Academy of Applique is held at the world renowned Kingsmill Resort in Historic Williamsburg, VA. A block of rooms has been set-aside for our attendees. Students are responsible for their own reservations. Discounted room rates are as follows –

Resort Guestrooms	\$109.00/night
Resort One-Bedroom Suite	\$135.00/night
Deluxe Guestrooms	\$109.00/night
Deluxe One-Bedroom Suite	\$153.00/night
River Guestrooms	\$135.00/night
River One-Bedroom Suite	\$183.00/night

(all rates are subject to applicable state and county taxes)

Please reference **ID# APPLIQUE2020** when making your reservation, so that the resort will know that you are with the Academy. Free shuttle buses run from the rooms to the Conference Center where the classes are held. The Kingsmill Resort website is [www.kingsmill.com](http://www.kingsmill.com); simply click on the reservation button or phone (800) 832-5665.

August 3, 2019

Dear Fellow Appliquer,



Welcome to the Sixth Annual Academy of Applique! I would like to personally invite you to attend this weeklong conference dedicated to the teaching and sharing of all forms of appliqué. Fix yourself a cool glass of ice tea, a hot cup of coffee, or perhaps a relaxing glass of wine – put your feet up, and enjoy the enclosed catalog. All forms of appliqué from Baltimore to Broderie Perse, from Whimsical to Modern are offered. Similarly, all techniques are taught from needle turn to glue, from freezer paper to back basting, and prepared

edge for machine applique. This venue caters to all level of students from the absolute novice thru the intermediate to the very experienced appliquer. For those that have simply admired appliqué from afar, I say "Jump in! The water is fine!" I guarantee you that you CAN create stunning blocks/projects/ and quilts. Additionally, it provides a wonderful platform to get away, relax, and let yourself be pampered at the world renowned Kingsmill Resort while making new friends; or bring your BFFs with you (remember, there is a \$50.00 Discount Special for both you AND each new attendee. Bring enough friends and your tuition could be FREE).

This event is put on for the benefit of the students. We listen to what you want, and hopefully succeed in providing it. You told us what you would like to learn or experience. Requests for more Baltimore, Broderie Perse, modern, embellishment, and machine applique were voiced. Check out the enclosed catalog – I think we have addressed ALL requests as well as added several INTERNATIONAL teachers.

Several teachers are offering "modern" applique blocks and techniques while not forgetting our Baltimore "roots," (check out both Diane Kirkhart and Missie Carpenter's classes). Barbara Carper's original floral urn is a GORGEOUS, very embellished, traditional block. Judy Severson has been busy creating some new Broderie Perse design ideas - they are BEAUTIFUL! Let her help you create a beautiful quilt. Rita Verroca never lets us down with (2) new "history" blocks and (2) Baltimore blocks. An international flair is evident, presented by Kerry Burke, the dynamic teaching duo of Teri Young and Kara Mason, Wendy Westlake, Karen Styles and Irene Blanck. Jan Vaine is back with two beautiful blocks that proudly display your embroidery talents. New to our staff this year, bringing us her well renowned talents in maching applique is Annie Smith. And last, but certainly not least, is me - Barbara Blanton! I will be teaching and encouraging new students as they begin their applique journey.

Check out the new "Extracurricular Activity" on Sunday after registration - we are calling it "**Teachers In The Round.**" Come get a taste of new teachers, or future teachers and learn some quick applique tips.

Enjoy the catalog, and remember that Registration will be online again this year, starting at 12:00 noon EST on Monday (Labor Day), September 2, 2019. More details to follow.

Keep Stitchin'

*Barbara Blanton*

## CONTINUING FOR 2020

On RARE occasion, I hear the comment . . .” I would love to attend the Academy of Applique, but I just have too many unfinished projects.” Well, we have the solution for you! Join the excitement of the Academy while finishing previously started projects. The 2020 Academy of Applique is offering (2) options:

Option #1 – **INDEPENDENT STUDY** - If you have previously taken a class from Rita Verroca or Kerry Burke and would like to sit in their class while completing a previously started project . . . then **INDEPENDENT STUDY** is for you. This “class” is for either teacher, and either session (Monday – Wednesday or Thursday – Saturday). The “class” includes breakfast and lunch all three days. \$565.00

Option #2 – **SIT AND STITCH** – If you would like a calm, inspiring, unstructured “zone” to relax, stitch, and share ideas and techniques with fellow appliquers then **SIT AND STITCH** is for you. This “class” is for either session (Monday – Wednesday or Thursday – Saturday). The “class” includes breakfast and lunch all three days. \$425.00

Come JOIN THE FUN! Pick the Option that works best for you!



## FREQUENTLY ASKED QUESTIONS

**How do we reserve a room?** The Academy of Applique is held at the world renowned Kingsmill Resort in Historic Williamsburg, VA. A block of rooms has been set-aside for our attendees. Students are responsible for their own reservations. Discounted room rates are as follows –

Resort Guestrooms	\$109.00/night
Resort One-Bedroom Suite	\$135.00/night
Deluxe Guestrooms	\$109.00/night
Deluxe One-Bedroom Suite	\$153.00/night
River Guestrooms	\$135.00/night
River One-Bedroom Suite	\$183.00/night

(all rates are subject to applicable state and county taxes)

Please reference ID# **APPLIQUE2020** when making your reservation, so that the resort will know that you are with the Academy. Free shuttle buses run from the rooms to the Conference Center where the classes are held. The Kingsmill Resort website is [www.kingsmill.com](http://www.kingsmill.com); simply click on the reservation button or phone (800) 832-5665.

**What is the cost of a class?** The cost of each class is \$565.00 (with the exception of Sit and Sew and Beginning Applique).

**What is included in the registration fee?** Each class fee includes (18) hours of instruction over (3) days PLUS breakfast and lunch for each of the (3) days.

**What is available for me if I am not taking a class on a specific day but want to be a part of the "action?"** There is a Sit and Stitch class that is available for a nominal fee, which includes meals and the teacher "de jour" speech.

**How do we register for a class?** Review the Class catalog, print off the Worksheet tab on the website, complete the worksheet for your convenience in registering, and stand by your computer on Labor Day, September 2, 2019. At exactly 12:00 noon EST, log on to the website [www.academyofapplique.com](http://www.academyofapplique.com) and follow the instructions to register.

**How do we pay for a class?** At the time of registration, a minimum of \$300.00 is collected with the balance of tuition due on October 4, 2019. All fees are paid either by credit card or debit card. Attendees are welcome to pay all tuition at time of registration as this will hold down costs.

**What are the class times?** Classes are daily from 8:30 a.m. – 11:30 a.m. and 1:30 p.m. – 4:30 p.m. This allows a two hour lunch for eating, listening to a short teacher introduction, and shopping from teachers as well as vendors on site.

**Will there be vendors available?** Yes. Although this is NOT a quilt show, HUZZAH QUILT SHOPPE will be onsite, a thread vendor, the Shaker Box store in addition to teacher "stores" and a few surprise vendors.

**Is there transportation from the airport?** We will try to accommodate as many attendees as possible. If we cannot accommodate your flight (or train), we are happy to suggest alternative transportation.

**What is the attire?** Casual, casual, casual. With that said, this IS Virginia, so I would recommend layering.

**What if I am bringing a spouse or friend that is NOT taking classes. What can they participate in?** Meal tickets (to include breakfast and lunch) are available for guests which will allow them to enjoy the delicious Kingsmill cuisine, the teacher introductions, as well as see teacher quilts. Guests are always welcome at our "Taste of Williamsburg" dinners, Show and Tell programs, and participation in the Wednesday evening game.

**Can I visit the Colonial Village during my trip?** Yes. There is a free shuttle from the resort to Colonial Williamsburg.

**What is the first thing I should do upon arrival?** Check-In for your room, then come downstairs and check-in for the Academy.

**IF YOU HAVE ANY QUESTIONS, PLEASE DON'T HESITATE TO CALL (757) 565-5299.**



## **Irene Blanck**

Hometown: Keilon Downs, Victoria, Australia

Company: Focus on Quilts

Website: [www.focusonquilts.com.au](http://www.focusonquilts.com.au)

Email: [blanckirene@gmail.com](mailto:blanckirene@gmail.com)

I started quilting many years ago after seeing a quilt in a magazine. I tackled my first quilt on my own and made every mistake in the book!! I enjoyed machine piecing for a long time until I got the taste for needle-turn appliqué.

I started designing my own quilts in 2007. I design applique as well as pieced quilts.

I began teaching my designs a few years. My classes have proved popular with many students returning for more classes as well as being invited to return to teach at shops and guilds. I absolutely love traveling – by myself – and have run workshops in Australia, the US and Europe.

I love teaching classes in all aspects of needle-turn applique and piecing. I like to think of my classes as “sit and sew” sessions – or “mini quilt-ins” – where we have a fun and relaxing day, chatting to friends as well as learning a new technique or perfecting on old techniques. I teach needle-turn appliqué with the use of a light box and glue – therefore no pins. I encourage my students to prepare a complete block so that it is portable and can be completed anywhere, any time. During my classes I strongly promote the “joy” of quilting – having fun with your sewing. I also encourage women to become more confident with choosing fabric for their quilts – as we all know this is something that most quilters have difficulty with. I have been so fortunate to have met many amazing quilters from around the world whom I now consider as friends.

In 2015 Quiltmania released a book called Focus on Applique with patterns of 13 of my quilts. I have also had my patterns in magazines in Australia and in Europe.



## MOSAICS

Taught by  
**Irene Blanck**

Email: [blanckirene@gmail.com](mailto:blanckirene@gmail.com)

**3 day class \$565.00**

**MONDAY, TUESDAY, WEDNESDAY**

### CLASS DESCRIPTION:

MOSAICS was inspired by a quilt featured in *Elegant Geometry - American and British Mosaic Patchwork*. This quilt was probably made in the UK 1820 - 1840. You will learn the easy way to make hexagons, reducing prep time; then concentrate on needleturn applique the fun and relaxing way and techniques to make prepping your work quick and easy.

Quilt measures 66" x 66"

### SUPPLY LIST:

Karen Kay Buckley Perfect Circles  
Small rotary cutter, ruler and cutting board (or share)  
Small embroidery scissors for applique  
Fabric scissors for cutting larger shapes  
Applique needles - #10 straw (I prefer  
Jeana Kimball's)

Roxanne's Glue Baste-It

Frixion pen, white gel pen, and pencils

Thread to match applique fabrics (good cotton, good polyester, or silk. I use Aurifil #2900 or #2325)

Clover 1/4" and 3/8" bias maker

A light box (if you can possibly bring one)

### FABRIC REQUIREMENTS:

Cut a 42" square from your background fabric for the center square (if you want to use one fabric for the entire quilt background, you will need about 4 yards)

22" square of fabric for wreath around the center

Fabric for bird, flowers, leaves and stems - lots and lots of fat quarters. Raid your stash of fabric for all your favorite fabrics

"MOSAICS - Complete" hexagon and diamond papers from [Paperpieces.com](http://Paperpieces.com) or purchase onsite at Huzzah Quilt Shoppe

\* Lab fee of \$25.00 will cover the pattern.





## TULIPA

Taught by  
**Irene Blanck**  
 Email: [blanckirene@gmail.com](mailto:blanckirene@gmail.com)

**3 day class \$565.00**

**THURSDAY, FRIDAY, SATURDAY**

### CLASS DESCRIPTION:

Tulipa is based on an antique crib quilt made by Rebecca Kohler (1943).

You will learn the easy way to make diamonds using Sewline glue, reducing prep time; then concentrate on needleturn applique and why I love it so much. You will learn that it need not be difficult - it should be relaxing and fun - and this class will prove that to you.

Quilt measures 61" x 61"

### SUPPLY LIST:

Karen Kay Buckley Perfect Circles  
 Small rotary cutter, ruler and cutting board (or share)  
 Small embroidery scissors for applique  
 Fabric scissors for cutting larger shapes  
 Applique needles - #10 straw (I prefer Jeana Kimball's)  
 Roxanne's Glue Baste-It  
 Frixion pen, white gel pen, and pencils  
 Thread to match applique fabrics (good cotton, good polyester, or silk. I use Aurifil #2900 or #2325)  
 Clover 1/4" and 3/8" bias maker  
 A light box (if you can possibly bring one)

### FABRIC REQUIREMENTS:

Cut a piece of background fabric to 42" square for the center  
 Lots and lots of fat quarters, fat eighths and scraps for the other applique  
 1 1/4" eight pointed star papers from [Paperpieces.com](http://Paperpieces.com) or purchase onsite at Huzzah Quilt Shoppe

\* Lab fee of \$25.00 will cover the pattern.



## **Barbara Blanton**

Hometown: Williamsburg, VA

Company: Academy of Applique

Website: [www.academyofapplique.com](http://www.academyofapplique.com)

Company: Huzzah Quilt Shoppe

Website: [www.huzzahquilts.com](http://www.huzzahquilts.com)

Email: [barbara@academyofapplique.com](mailto:barbara@academyofapplique.com)

I have always sewn, but it was an antique quilt that I received as a teenager that inspired me to learn to quilt. I checked out a book from the library and made my first quilt, a log cabin, using templates cut out of newspaper in 1973 (this was long before rotary cutters). I finished the top with excitement, then read the next step - "Layer, quilt as desired, and bind." I layered it with "puffy" batting (after all it WAS for a child), but could not find a book in the library called "Quilt As Desired." My Grandmother came to the rescue and "machine" quilted it in the ditch.

Hundreds of quilts, and some thirty years later, I became obsessed with appliqué. I took classes from every appliqué teacher I could find, and practiced – practiced – practiced. I appliqué an average of (3) queen size tops a year; augmented with pieced quilts.

Through the years I have participated in, and led guilds, in St. Louis, MO; San Antonio, TX and Palmdale, CA. I organized and ran a charity group in Riverside, CA for (7) years that produced "Snuggle Quilts" for at-risk children. We donated up to 200 quilts a year to the local Police Department.

Five years ago I formed the ACADEMY OF APPLIQUE – a week long appliqué retreat/school held annually at the Kingsmill Resort in Williamsburg, VA. I LOVE IT! It is a lot of work, but definitely my favorite week of the year.

Additionally I have an online quilt store called HUZDAH QUILT SHOPPE, and a new venture with my friend Nancy Swietek called "An Applique Getaway." The event is held annually in the midwest, for a limited group of appliquers.



## WELCOME SPRING

Taught by

**Barbara Blanton**

Email: [barbara@academyofapplique.com](mailto:barbara@academyofapplique.com)

**3 day class \$465.00**

**MONDAY, TUESDAY, WEDNESDAY**

**CLASS DESCRIPTION:** This is a beginner/ refresher class, perfect for the nay sayers; those that describe it as the dreaded 'A' word; and those that say they do not do hand work.

By the end of class you will LOVE applique, Guaranteed! And be confident with templates, overlays, circles, curves, points and needle turn applique. This will set you up for success in ANY other class offered at the Academy.

Block measures 12" x 12"

**The best part of this class is that you don't HAVE to bring ANYTHING!  
Everything you need will be available in class to try and purchase if desired.**

**SUPPLY LIST:** If you have the following items, please bring them. If you don't have them, please don't buy them - try mine first

Spray starch or Sizing  
Small Stencil Brush  
Scissors - one small pair that are sharp to the point  
Scissors - pair for cutting out pieces  
Roxanne's Glue Baste It  
Applique Pins  
Tweezers  
1/4" Bias Tape Maker  
White chalk marking pencil  
Regular lead pencil  
Thimble (if needed)  
Task Light (like an Ott light)  
Extension Cord

**FABRIC REQUIREMENTS:** (I will provide a kit, but you are welcome to bring your own fabrics if you wish)

Background - 15" square  
Daisy Petals - 6" square of (4) different shades of one color (I used purple)  
Small Flowers/Center of Daisies - 6" square of yellow (I used 2 different yellows)  
Circles - 6" square of pink  
Stems, leaves, circles - 1/2 yard of green

Lab Fee - \$20.00 includes pattern, template material, overlay, applique needles, thread, fabric



## Kerry Burke

Hometown: Barrie, Ontario, Canada

Company: Simple Bird Studio

Website: <http://simplebirdstudio.com>

Email: [burke.kerry@ymail.com](mailto:burke.kerry@ymail.com)

I have been quilting for 30 years, and have loved every moment (and every quilt). I love to share my passion for Hand-Applique with everyone I meet! In 2003 I decided to open a quilt shop, The Quilted Cottage, in Barrie, Ontario. I carried fabric, patterns, notions and taught classes ranging from Beginner Patchwork to Intermediate Applique. In 2008, I had an amazing opportunity to purchase the local yarn store and combine the two businesses. It wasn't long before I realized that I wanted to pursue my love of Hand Applique. My daughter, Kelly, now manages the yarn store, True North Yarn Co. I started a blog and online tutorials to promote Hand Applique and Hand Quilting. The most asked question I received was "Where do I find the tools that I need to Hand Applique?". I decided to start an online business to specialize in hard to find applique tools, patterns and notions.

For many years I taught needleturn applique, but I noticed that many students struggled with this method, and they sadly gave up. I started to research different methods of hand-applique and decided to give Pearl Pereira's technique a try and I have never looked back!

My quilt "Friends of Baltimore" won The Excellence in Workmanship for Applique at Quilt Canada 2016, and my quilt "To Everything There is a Season" won The Excellence in Workmanship for Applique at Quilt Canada 2017.

I am so excited to share everything (and I do mean everything!) I know with my students. My teaching motto is: I am not going to show you what I can do, I am going to show you what you do!



## SOUTHWEST SUCCULENTS

Taught by  
**Kerry Burke**  
 Email: burke.kerry@ymail.com

**3 day class \$565.00**  
**MONDAY, TUESDAY, WEDNESDAY**

### CLASS DESCRIPTION:

If you have already taken a class with Kerry and want to continue your Prepared Edge Applique journey, then you will enjoy this class. You will learn how to sort out the layers of a complex block. This project is not nearly as intimidating as you might think. Southwest Succulents is the 6th block in a series of wall hangings depicting everything I love...flowers, leaves, tendrils and lovely vases.

Block measures 19" x 43"

### SUPPLY LIST:

Pressing board  
 Mini Iron (Prym Dritz mini iron or Clover Mini Iron)  
 Stiletto Spray starch (Easy On) or Best Press  
 Small jar  
 Small Paint brush (the bristles should measure 1/4" across Stiletto or Tailor's Awl)  
 Clover 1/4" Bias Tape Maker

Thread to match applique fabrics (Mettler 60 weight or Aurifil 50 weight)  
 Paper scissors to cut freezer paper  
 A light box (if you have one)  
 10 - 15 zip lock baggies

### FABRIC REQUIREMENTS:

Background - 24" x 47"  
 Black Trim - 6" x 45" (Width of Fabric)

Light lime green (G1) - 4" x 6" - tendrils  
 Medium lime green (G2) - 5" x 7" - tendrils  
 Dark lime green (G3) - 6" x 6" - tendrils

Light green (G4) - 6" x 10" - large leaves  
 Medium green (G5) - 7" x 10" - large leaves  
 Dark green (G6) - 9" x 9" - large leaves  
 -one square 10" x 10" for bias strips

Light moss green (G7) - 7" x 7" - tall fern  
 Medium moss green (G8) - 7" x 8" - tall fern  
 Dark moss green (G9) - 10" x 10" - tall fern

Light beige/brown (BR1) - 9" x 10" - large flower and vase  
 Medium beige/brown (BR2) - 10" x 10" - large flower/vase  
 Light brown (BR3) - 8" x 8" - light brown Lotus Pods  
 Dark brown (BR4) - 7" x 9" - dark brown Lotus Pods

Small applique scissors (I recommend Karen Kay Buckley's Perfect Scissors - green handle)  
 Applique needles  
 Clover water soluble marker (thick)  
 Roxanne's Glue Baste-It  
 Favorite Thimble of Thimble Pads

Light Cream (CR) - 4" x 4" - vase detail  
 Light Blue (B1) - 3" x 6" - vase  
 Medium Blue (B2) - 6" x 7" - vase  
 Medium Dark Blue (B3) - 6" x 6" - vase  
 Dark Blue (B4) - 4" x 9" - vase  
 Black (BL) - 3" x 7" - vase

Light Turquoise (T1) - 7" x 7" - flowers  
 Medium Turquoise (T2) - 6" x 6" - flowers  
 Dark Turquoise (T3) - 4" x 4" - flowers

Light Purple (P1) - 8" x 10" - flowers  
 Medium Purple (P2) - 7" x 7" - flowers  
 Medium/Dark Purple (P3) - 8" x 10" - flowers  
 Dark Purple (P4) - 5" x 6" - flowers

Light Blue/Green (BG1) - 6" x 11" - stems/leaves  
 Medium Blue/Green (BG1) - 5" x 5" - blue leaves

Light Yellow (Y1) - 9" x 9" tendrils and flowers  
 Dark Yellow (Y2) - 7" x 9" tendrils and circles  
 Orange (OR) - 8" x 8" - tendrils and circles

\* Lab fee of \$25.00 will cover freezer paper templates and pattern.





## YELLOW FINCHES

Taught by  
**Kerry Burke**  
 Email: burke.kerry@ymail.com

**3 day class \$565.00**  
**THURSDAY, FRIDAY, SATURDAY**

### CLASS DESCRIPTION:

This wall hanging is suitable for all applique enthusiasts, even if you are a true beginner. I will teach you everything (and I mean everything!) about Prepared Edge Applique. It truly is easy...once you know how!

Block measures 20" x 23"

### SUPPLY LIST:

Pressing board  
 Mini Iron (Prym Dritz mini iron or Clover Mini Iron)  
 Stiletto or Tailor's Awl  
 Spray starch (Easy On) or Best Press  
 Small jar  
 Small Paint brush (the bristles should measure 1/4" across Stiletto)

Small applique scissors (I recommend Karen Kay Buckley's Perfect Scissors - green handle)  
 Applique needles  
 Clover water soluble marker (thick)  
 Roxanne's Glue Baste-It  
 Favorite Thimble of Thimble Pads  
 Paper scissors to cut freezer paper

Thread to match applique fabrics (Mettler 60 weight or Aurifil 50 weight)  
 A light box (if you have one)  
 10 - 15 zip lock baggies

### FABRIC REQUIREMENTS:

Background - 24" wide x 27" long  
 Light Yellow (Y1) - 8" x 10" -birds  
 Medium Yellow (Y2) - 7" x 10" - birds  
 Dark Yellow (Y3) - 6" x 8" - birds  
 White (W) - 8" x 16" includes lining - birds  
 Black (BL) - 9" x 12" - birds

Light Pink (P1) - 6" x 10" - flower petals  
 Medium Pink (P2) - 8" x 11" - flower petals  
 Dark Pink (P3) - 10" x 10" - flower petals  
 Burgundy (B) - 2" x 3" -flower centres

Light Green (G1) - 4" x 6" - small leaves  
 Medium Green (G2) - 9" x 10" - leaves  
 Dark Green (G3) - 9" x 10" - leaves  
 Mauve (M) - 13" x 13" - leaves

Brown (BR) - 10" x 12" - branches

\*Lab fee of \$20.00 The patterns include all of the freezer paper templates already traced and ready for you to cut out and start prepping.



## Missie Carpenter

Hometown: Urbandale, Iowa

Company: Traditional Primitives

Website: [www.traditionalprimitives.com](http://www.traditionalprimitives.com)

Email: [missie@traditionalprimitives.com](mailto:missie@traditionalprimitives.com)



Missie Carpenter of Traditional Primitives has been sewing in one form or another since she was about 10 years old. Starting with tiny clothes for her Wishnick Troll Doll, she moved on to Clothing Construction and English Smocking when her children were young, and now has a passion for Quilting. Majoring in Fashion Merchandising at the University of Missouri, she was exposed to Design using fabric and illustration, and has stuck with it ever since.

Missie has found her favorite style of stitching and settled on Applique, Wool Applique, Punchneedle and English Paper Piecing (using a unique method of basting English Paper Piecing with Starch). She has videos on her website, [www.TraditionalPrimitives.com](http://www.TraditionalPrimitives.com) and an informative blog, which touches on her unique technique for basting English Paper Piecing (and Applique') as well as highlight her love of layering cotton and wool. Missie enjoys sharing her knowledge with quilting students and wants to find ways to make the process easy and enjoyable for each person, offering options as she teaches.

The technique Missie uses for basting English Paper Piecing with starch is similar to basting applique' with starch. She has created several original notions that help make the technique easier and give more precise results. See them on her website at [TraditionalPrimitives.com](http://TraditionalPrimitives.com). The notions give the seamstress fast and precise results with ease!



## COEUR d'ALENE

(pronounced Coor da'Leen)

Taught by

**Missie Carpenter**

Email: [Missie@traditionalprimitives.com](mailto:Missie@traditionalprimitives.com)

**3 day class \$565.00**

**MONDAY, TUESDAY, WEDNESDAY**

### CLASS DESCRIPTION:

This Baltimore Album inspired block is 18" finished and can stand alone as a miniature quilt or can be used as the first block in a new quilt design that will be offered for the first time at the Academy of Applique. The design is simple yet slightly challenging-just enough challenge to make the stitching fun for this block! We will tackle easy 1/8" stems, tiny circles and leaves and sharp points along with a touch of EPP using Missie's unique method of basting. Options for adding wool will be offered to simplify and speed the process of making blocks like this. This block can be offered in any larger size for the workshop. Please discuss this with Missie prior to the workshop so she can have your adjusted pattern ready for you.

### SUPPLY LIST:

Basic Hand Sewing Supplies  
Applique glue (washable)  
Clover Mini Iron model MCI900  
Portable pressing mat

Stiletto (Missie highly recommends her Fingertip Stiletto & starch brush)

Starch and paint brush

Good table light and extension cord

Small cutting mat and X-acto knife with sharp blade (Missie will bring her to share if you don't have one)

Small paper scissors, small fabric scissors, and applique trimming scissors

Needle Threader

Round toothpicks

Ruler

Preferred marking pencil or marker

X-acto knife with sharp blade

60 weight or higher thread to match fabrics

NOTE: \*\* If you do not own some of the supplies listed please don't purchase ahead of time. Missie will offer her original sewing notions created for starch basting that make the technique so much more successful-the Starch Brush, Fingertip Stiletto, Starch & Hexie shaped Pressing Mat. Options of thread, fabrics, sharp scissors, needles, mini irons and more will be available to purchase if you don't have any on hand. If you know you want some of these items please reserve ahead of time to ensure she brings enough for everyone's needs.

### FABRICS:

5/8 yard for 20" square of light colored fabric for background and scallop appliques. Please pre cut the 20: square before coming and bring the extra fabric

1/2 yard red or color of your choice for scalloped sashing applique

small scaled cotton print fat quarters or scraps for appliqué and piecing. Dark brown for stems, green for leaves, red for stars and fruits, yellow for stars, orange, lime green & plumb for fruits. All of these colors will be repeated in the star appliques as well

LAB FEE: Kit Fee \$15.00 Missie will provide you with the hand stitching needles she loves to use; preprinted freezer paper templates, and a sample of thread

FABRIC KIT FEE (Optional): \$28.00



## GARDENS OF A KING

(Blocks #9, Saffron Block and Elongated Star)

Taught by

**Missie Carpenter**

Email: [Missie@traditionalprimitives.com](mailto:Missie@traditionalprimitives.com)

**3 day class \$565.00**

**THURSDAY, FRIDAY, SATURDAY**



### CLASS DESCRIPTION:

This Applique and EPP workshop will teach you Missie's unique basting technique for EPP using starch and freezer paper. Intricate and precise blocks can be made using this technique and you will be amazed at the results! Sharp points, precise curves and quick basting! We will focus on a few blocks from the quilt, The Gardens Of A King- a circular pieced block, an all cotton appliqué block and an elongated Star with extreme sharp points. We will also touch on the shark tooth border. The finished elements can be used to make a runner or used in the quilt should you choose to continue on making the entire quilt. The quilt Gardens of a King were inspired from the original quilt called The King George III Coverlet owned by the Albert Museum in London.

### SUPPLY LIST:

Basic Hand Sewing Supplies

Small paper scissors, small fabric scissor

Applique glue

Clover Mini Iron model MCI900

Portable pressing mat

Starch and paint brush

Stiletto (Missie highly recommends her Fingertip Stiletto)

Good table light and extension cord

NOTE: \*\* If you do not own some of the supplies listed please don't purchase ahead of time. Missie will offer her original sewing notions created for starch basting that make the technique so much more successful-the Starch Brush, Fingertip Stiletto, Starch & Hexie shaped Pressing Mat. Options of thread, fabrics, sharp scissors, needles, mini irons and more will be available to purchase if you don't have any on hand. If you know you want some of these items please reserve ahead of time to ensure she brings enough for everyone's needs.

### FABRICS:

Pre cut the following sizes for background fabrics - two 10" x 10", four 10" x 12", 15" x 4". For a scrappy look, choose a variety of prints for these backgrounds; 15" x 4" red print for shark tooth border. (You may want to bring extra if you are a speedy stitcher, you can start on several)

Various fat quarters or scraps in a variety of colors for the blocks

60 weight or higher thread to match fabrics

LAB FEE: Kit Fee \$15.00 Missie will provide you with the hand stitching needles she loves to use; preprinted freezer paper templates, 60 weight thread sample and lightweight fusible interfacing





## **Barbara Carper**

Hometown: Charles City, VA

Email: [brcarper@hotmail.com](mailto:brcarper@hotmail.com)

Barbara Robertson Carper is an accomplished quilter and professional educator. She began sewing as a child, happily making doll clothes by hand or on her mother's portable Singer sewing machine. Before she was 5 years old, Barbara learned to embroider and in first grade, she was asked to exhibit samples of her work on a class bulletin board. In high school, she made her first full-size quilt top, cross stitched on a stamped Paragon pattern.

A forty year career in education followed Barbara's college and graduate work. In addition to teaching on the high school and college levels, Barbara traveled extensively, often organizing and leading students on trips throughout Europe, Africa, and Asia. During those years Barbara dabbled in various forms of needlework--needlepoint, crochet, knitting, flag making, and quilting.

In 2006, she met and fell in love with Bill Carper, a retired businessman who lives in Charles City, VA. They married in 2008, and Barbara moved to an idyllic spot on the historic James River, not far from Williamsburg. While her husband refers to their location as nirvana, she calls it the boondocks, noting that there are few neighbors and that the closest grocery is 25 minutes away. The nearest quilt shop, well....

A friend who attended The Elly Sienkiewicz Applique Academy for many years suggested that Barbara enroll in the academy in order to meet local needlewomen. There, she was introduced to appliqué and Baltimore album quilts. Barbara describes her first days at the Academy as intimidating, but the teachers she met quickly put her at ease, and the friends she made welcomed her to their weekly Glory Bee. "If those ladies had been bank robbers, I would have been one too. Fortunately, they were appliquéers." Barbara continues to sew with them every Friday. In 2012 she returned to the Academy as a classroom helper. Teacher Evelyn Crovo-Hall became her mentor and friend, introducing her to prepared edge appliqué. In 2017, Barbara joined the faculty of Barbara Blanton's Academy of Appliqué in Historic Williamsburg.

Barbara has been a member of the Richmond Quilters' Guild since 1998 and a member of the Embroiders' Guild of America since 2016.





## FROM A JOYFUL GARDEN

Taught by  
Barbara Carper

Email: [brcarper@hotmail.com](mailto:brcarper@hotmail.com)  
**3 DAY CLASS \$565.00**  
**THURSDAY, FRIDAY, SATURDAY**

### CLASS DESCRIPTION:

This elegant bouquet, arranged in a moiré vase, was cut from a joyful garden. Combining petals of silk and cotton, enhanced by a sprinkle of beads or a gathered ribbon center, the flowers seem to sparkle. Clusters of colonial knots and seed beads form delicate buds that attract a trio of honey bees. The prepared edge method of appliqué enables stitchers to assemble the elements of the bouquet off the block which measures 18"x18". (I love using silk, but if you prefer to use cottons alone, the results will still be spectacular!)

### SUPPLIES:

- mini iron and a firm ironing surface
- 1/4" stencil brush, spray starch, and a small container to hold starch
- personal sewing lamp, electrical cord and power strip
- stiletto
- sharp to the point scissors and paper scissors
- tweezers, emery board
- pencil for marking fabric and a roll of 1/4" quilter's tape
- Roxanne's glue baste and small appliqué pins
- appliqué needles #11; embroidery needles # 8; chenille needles # 22 for ribbon work
- 20"x20" piece of foam core
- any basic sewing notions that you like to use, such as a thimble, needle threader, thread heaven, etc.

### FABRICS: and embellishments

- background fabric 26"x26", horizontal and vertical registration lines stitched
- small pieces of a variety of fabrics (silk or cotton) in your choice of colors for the appliqué flowers, leaves, and vase
- thread to match appliqué pieces (silk or cotton)
- silamide or nymo thread for sewing beads
- silk ribbons (4mm), seed beads, and embroidery floss (silk or cotton) for stems and embellishments
- three small metallic bees (if you cannot source something similar, consider embroidering your bees, or fussy cut bees- or butterflies- to apply à la broderie perse)
- thin cotton batting to stuff petals (approx. 12"x12")

### Notes and tips:

- I like to use 4-5 different shades of each color way when making flowers, allowing extra for fussy cutting. This gives flowers the illusion of dimension and texture. Batiks lend themselves especially well to create shading.
- If choosing silks for appliqué, I always stabilize them first. I recommend using Presto Sheer which is available online from Sue Spargo if your local shop doesn't carry it.
- Hand dyed ribbons and matelassé silk (my favorite!) are available from [maryjohiney.com](http://maryjohiney.com). Dupioni silk is available in the bridal section of most fabric shops.
- I used a piece of moiré fabric (also stabilized with Presto Sheer) for the vase, but whatever fabric you choose will surely be stunning.

Lab Fee: \$14 (Includes freezer paper templates)



## **Diane Kirkhart**

Hometown: Vienna, Virginia

Company: Kirk Art

Website: [www.dianekirkhart.com](http://www.dianekirkhart.com)

Email: [dianekirkhart@gmail.com](mailto:dianekirkhart@gmail.com)

Diane began her sewing at an early age as many of us did learning from her mother. Her first project was a fully lined wool coat for one of her dolls. Mom said if you're going to learn, you may as well learn it all. She has since then had a love of all things fabric. She has dabbled in many crafts, knitting, crochet, cross stitch, bobbin lace and ceramics. She even did some painting for a while teaching friends and friends of friends. One afternoon in one such class there were several quilters. They asked if she would be interested in attending a quilt meeting that evening. Of course she went and as they say, the rest is history. Fabric was back in her life and she was able to do her art with fabric.

Diane works part time and teaches at Jinny Beyer Studio in Great Falls. She is an award winning quilter winning for applique and hand quilting. She has even hand quilted a king size quilt for Elly Sienkiewicz which hung in a special exhibit in the Houston Quilt Show in 2011. She also has had one of her quilts (Beauty, Happiness, Family Love) shown at the Houston Quilt Show in 2012. She has sewn many of the shop samples for Jinny Beyer Studio as well as samples for RJR Fabrics. She is married to THE BEST EVER HUSBAND and they have two married sons, two terrific daughters-in-law and five of the greatest grandsons ever. In August of 2017 she did a taping for The Quilt Show which airs February 25, 2018. The episode was about the three ways she chose to do Millefiori quilts from the book Millefiori Quilts by Willyne Hammerstein.



## **FARM TABLE RUNNER**

Taught by  
**Diane Kirkhart**

Website: [www.dianekirkhart.com](http://www.dianekirkhart.com) Email:  
[dianekirkhart@gmail.com](mailto:dianekirkhart@gmail.com)

**3 DAY CLASS \$565.00  
THURSDAY, FRIDAY, SATURDAY**

### **CLASS DESCRIPTION:**

Create a table runner using the Appliquick tools and glue. If you are new to Appliqué or have been struggling with your current method getting perfect points and smooth curves, then this is the class for you. We will be highlighting our applique with Derwent Inktense Pencils.

### **SUPPLY LIST:**

- Small scissors that cut to the tip
- Inexpensive paint brush size 8 flat
- \*Bohin mechanical chalk pencil (my price is \$7.25) or a Sharpie Ultra Fine marker or Micron Pigma Pen size .08 or .05
- \*Thread to match your applique pieces (I use 100 weight silk but that's up to you; my price is \$4.00/spool)
- Needles that you are comfortable with and that work with the size thread you choose
- Small light box (optional)
- \*A thimble pad (a leather dot that sticks onto your finger . . . I prefer these when I'm using silk thread )my price is \$5.00)
- \*You will also need Appliquick tools (my price is \$30.00) and Appliquick glue (my price is \$8.00)

\* I will have these items in class available for purchase. Please contact me if you need them so I will be sure to bring enough (cash only).

### **FABRICS:**

- Background fabric of your choice 22" x 54" - 72" depending on the size you want it to be but a minimum of 54" (1.5 yards)

Lab Fee: \$25.00 Includes the pattern, 4 Derwent Inktense Pencils and Appliqué fabric kit with everything you need except your background fabric.



## Judy Severson

Hometown: Concord, Massachusetts

Author of 1 book:

Email: [judysev@gmail.com](mailto:judysev@gmail.com)



Judy's love of quilts dates back to 1979, when she was beginning her printmaking career. She chose quilts as the subject of her prints because she enjoyed using embossing to show texture. In order to learn about the different quilts and quilt patterns, she sought out people who were knowledgeable about quilts and traveled with them to view quilts in many museums and private collections throughout the country. Broderie Perse quilts quickly became her favorite style and knew she would one day make one. When her career as a printmaker was winding down she was taught to appliqué by a long-time friend of her mothers. After making several appliqué quilts, Judy found quilting fabric that she thought suitable for a Broderie Perse quilt and her life as a quilter begun in earnest. She wrote the book, *Flowers in Appliqué*, wanting to show others how fun it was to create their own Broderie Perse quilts with the printed motif fabrics that they loved. As a result of the book, Judy travelled to many quilt guilds to teach Broderie Perse appliqué. She then focused her teaching for the next 16 years at The Academy of Appliqué in Williamsburg, VA.

**Personal Notes** When creating a Broderie Perse quilt: I generally start with the layout of the flowers in the fabric and study how they are grouped with other flowers. I let the fabric suggest if it is suitable for the medallion center, or whether it would be better used in a border, or both. Studying quilts and seeing quilts from the past, as well as quilts made today, gives me inspiration. I think of my quilts as bed quilts, and enjoy the traditional approach using reproduction and contemporary fabrics, as well as some patchwork. In the beginning, I would add different border edging designs like dogtooth, stuffed quilting, other appliqué designs such as leaves, along with border prints. Now I am enjoying adding the different English paper piecing designs and exploring different shapes in the center medallion. I have such fun making Broderie Perse quilts and I want other quilters to have the same experience. In class, my students make their own "one-of-kind" medallion or block style quilt. I show how quickly these quilts go together when the layout of the fabric is used to the best advantage. In both classes Judy will show you how to design a vine that swings around the corners using no math.



) @# \ t - k @ 8 " k \ ) - k @ ' h - k o -

Taught by  
**Judy Severson**  
 Email: judysev@gmail.com

**3 Day Class \$565.00**  
**MONDAY, TUESDAY, WEDNESDAY**

**CLASS DESCRIPTION:** Broderie Perse is a very creative and individual style of quilting.

Pick and bring a large floral print that you love, letting the floral fabric lead the way to your selection of other fabrics. Learn to read medium to large floral fabrics finding garlands, bouquets and other surprises. Choose and bring a floral print that will play a major part in the quilt. Applique quilts in progress are welcomed.

#### **SUPPLIES:**

Scissors for paper and fabric  
 Rotary cutter and mat (optional)  
 Washable glue or glue stick (like Roxanne's)  
 Freezer paper (optional)  
 Template plastic (optional)  
 Thread for appliqué  
 Basic sewing kit including needles, thimble, thread, etc.  
 Personal sewing light and extension cord (optional, but recommended)

#### **FABRICS:**

##### **Background:**

Select a ground or background fabric that you will applique the flowers to. Choose a color close to the background shade of the large main fabric. It can have a small pattern in it or not. Bring enough for the center and possibly for a border if you wish.

##### **Applique:**

Select at least 1 yard floral fabric, and possible, two or more other floral prints that will enhance your main large floral. Printed floral flowers should be 1" to 3" wide.  
 Optional: Bring other fabrics that you might wish to use in the quilt so we can discuss possible borders and border edgings for your quilt.





## ENRICHING BRODERIE PERSE

Taught by  
**Judy Severson**  
 Email: judysev@gmail.com

**3 Day Class \$565.00**  
**THURSDAY, FRIDAY, SATURDAY**

**CLASS DESCRIPTION:** This is a class created especially for returning students but would benefit any Applique quilter. Start a new quilt or bring a quilt in progress. We will look at large floral fabrics and the different ways they can be used in the center or borders of the quilt. Selecting fabrics for Broderie Perse quilts is always an ongoing challenge. Always start with one or two large fabrics that you love. Judy will give ideas of fabrics to buy that can be used to enhance your main fabric in broderie perse.

Also, the shapes of English paper piecing can be used to add a lot of color and texture to a quilt. We will discuss traditional techniques along with unconventional uses of these traditional shapes.

### SUPPLIES:

Scissors for paper and fabric  
 Rotary cutter and mat (optional)  
 Washable glue or Glue stick (like Roxanne's)  
 Freezer paper (optional)  
 Template plastic, small piece (optional)  
 Thread for appliqué  
 Basic sewing kit including needles, pins, thimble, thread, etc  
 Personal sewing light and extension cord (optional, but recommended)

### FABRICS:

#### Background:

Select a ground or background fabric that you will appliqué the flowers to. Choose a color close to the background shade of your large main floral fabric. The size is optional from 14" square to a 44" square for a medallion block.

#### Applique:

Bring at least 1 yard of large floral fabric and, if possible, 1/2 yard or more of two or more other floral prints that enhance your main large floral. Printed floral flowers should be 1" to 3" wide.

If you wish to create a basket or urn to hold the flowers, or a bow to tie the flowers, bring appropriate fabrics. Optional: Bring other fabrics that you might wish to use in the quilt so we can discuss possible borders and border edgings for your quilt.

This is a class especially for returning students of Broderie Perse quilts, but would benefit any applique quilter. We will look at large and medium print fabrics to use as the focus of your quilt. We will also discuss how other fabrics can be used to enhance the quilt. You will see how the different shapes of English paper piecing will add to the texture and color in your quilt.

Choose and bring a large or medium floral print that will be the focus of your quilt. Applique quilts in progress are welcome.



## Annie Smith

Hometown: Ft. Worth, Texas

Blog: [anniesmith.net/blog](http://anniesmith.net/blog)

Email: [annie@anniesmith.net](mailto:annie@anniesmith.net)

I'm more than just a pretty face.

I am a Quilter.

I design quilts and have my own Pattern Publishing company.

I've had my quilts published in Mark Lipinski's Quilter's Home magazine (and wrote articles, too).

I won Best of Show at the California State Fair for Crazy Quilting.

I am a national and international Quilting Instructor – to Guilds, Quilt Shops, Quilt show venues and Online. I teach at places like Smoky Mountain Quiltfest, Utah Quilt Guild's Quiltfest, International Quilt Market and John C. Campbell Folk School. And, I do my own retreats.

I am a Bernina Artisan Ambassador.

I am an Aurifilosopher.

I am the Quilt Police (aka: Quilt Judge).

I am a Podcasting Quilter. I created the first podcast for Quilters in 2005 — Quilting Stash. I've done over 220 podcasts since then and I'm still going.

You can find the podcast on this website and on iTunes and listen any time.

Just listen.

I am a C&T Author.

I'm an iQuilt instructor; an Aurifil designer; an Annie's instructor and a Quilt Show.com alumni.

I have been an:

Artist in Residence at Empty Spools Seminars in Asilomar, CA

Artist in Residence at Elly Sienkiewicz's Applique Academy

Aurifil Designer of the Month

My expertise is Machine Applique and the Art of Color/Fabric Selection.

The West of Baltimore quilt is my best known quilt. It has been around the world, curated for Elly Sienkiewicz's Baltimore Revival II exhibit at Houston Quilt Festival, and featured in the Keepsake Quilting catalog for 2 1/2 years as a block of the month kit.

See my Garden Delights quilt at any of the AQS Quilt shows in 2019.

And, watch for my Love Is Spoken Here quilt at International Quilt Market in Houston in the Fall of 2019.

I know a thing or two about Quilting.

## LOVE IS SPOKEN HERE

### (Border)

Taught by  
**Annie Smith**  
Email: [annie@anniesmith.net](mailto:annie@anniesmith.net)

**3 day class \$565.00**  
**MONDAY, TUESDAY, WEDNESDAY**



### CLASS DESCRIPTION:

When Annie designed this border piece in 2002, she didn't know that it would become the favorite design of everyone who saw it. Her inspiration was to capture the essence of her maternal grandmother. A spray of flowers in a heart motif, roses and bluebirds capture a hanging garden. In this introductory class, Annie is offering this exclusive design using her machine applique technique; fused, raw-edge and beautifully stitched. The technique is archive safe, pliable not stiff, and durable. In addition to basic machine applique techniques, free motion thread embellishment is a part of this class.

It can be incorporated into a quilt, or made into a table runner, a bench runner or as a signature wallhanging.

The border size is 14" x 53"

**This is a machine applique class. Your sewing machine needs to have a zigzag, blanket stitch or blind hem stitch.**

### SUPPLY LIST:

- Sewing Machine, power cord, foot pedal and manual for your machine
- An Open-toe applique foot, and a darning foot with a spring in it
- Empty bobbins for your machine (as many as you have different thread colors for your fabrics)
- A Bobbin bolder (I like the Bobbin Saver ring)
- Schmetz Microtex sewing machine Needles, 80/12 size
- Glue Stick
- Small Applique glue
- Small pair of precision scissors (I like the Elan E6 scissors. I will have them for sale in class)
- The Ultimate Applique Resource Tool (C&T Publishing) - you can get it online, or let me know and I will bring them for sale
- Basic sewing kit

Fabric requirements on the next page

Lab Fee: \$30 includes the things you will use in class (not unnecessary things).- a package of fusible web, a pencil, a needle for burying threads and the block pattern.

## **FABRIC:**

- Two yards of background fabric
- 1 ¾ yards of backing fabric
- ½ yard of binding fabric

When you choose the fabrics for your applique, please keep in mind that applique looks the most beautiful when you use a gradation of color. That means that you choose a color, and add a grouping of fabric that blends from light to dark in several stages. Quilters use five steps of Value (the lightness and darkness of color): light, medium light, medium, medium dark and dark. That is how I choose all of the fabric for my quilts. If all of your fabrics are medium value, they will all blend and blur -- so you won't have any dimension or contrast in your piece.

So, choose a color palette -- and then choose light to dark companion fabrics for your piece.

Monochromatic prints, batiks or dyed fabrics are beautiful for this project. Zoom on the class sample photo so you can see what I chose. I used all Kona Solid fabrics for the sample -- but that doesn't mean that you need to.

If you need help, you're welcome to send me photos of your fabric selections prior to class and I'll give you feedback.

Most of the applique will take scraps of fabric, not yardage. Fat quarters are safe and you'll have some left.

This is how my fabrics selections break down:

- For the roses, I used four steps of Red from light to dark (the lightest being pink)
  - I used three Greens for the stems and leaves. You'll need a fat quarter of the darkest green for stems.
  - Blue for the birds
  - one Yellow for the dots and bird's breasts
  - a selection of Pink - light to dark for the fuchsia
  - three Oranges for hibiscus
  - two lavenders for the tulip
  - Some extras scraps for the little flower grouping at the base of the center heart
- You don't have to use the color selections that I did -- just remember to use a gradation of color when choosing your fabrics.

- You will need thread to match each of your applique fabrics. I use Aurifil 28 weight thread, which is a little thicker than 50 weight and has a beautiful sheen. I will have an assortment of those threads for sale in class. Sometimes one thread will work for two or more fabrics. Watch my YouTube video on how I choose threads for applique here:  
[https://www.youtube.com/watch?v=K\\_UvinV\\_xeU&t=2s](https://www.youtube.com/watch?v=K_UvinV_xeU&t=2s)



## A IS FOR APPLIQUE WREATH

Taught by

**Annie Smith**

Email: [annie@anniesmith.net](mailto:annie@anniesmith.net)

**3 day class \$565.00**

**THURSDAY, FRIDAY, SATURDAY**

### CLASS DESCRIPTION:

Elevate a traditional Baltimore-style wreath by adding your first or last initial to the block. Rosebuds, cherries, assorted flowers and leaves create this unique block, designed exclusively for the Academy of Applique. The classic outer wreath is standard scale, while the initial motif is slightly smaller. All letter patterns from A - Z will be available for your use.

Annie's technique for successful machine applique is easily attainable and you'll love it.

This wall hanging is suitable for all applique enthusiasts, even if you are a true beginner. I will teach you everything (and I mean everything!) about Prepared Edge Applique. It truly is easy...once you know how!

The finished size of this project is 17" x 17"

**This is a machine applique class. Your sewing machine needs to have a zigzag, blanket stitch or blind hem stitch.**

### SUPPLIES:

- Sewing Machine, power cord, foot pedal and manual for your machine
- An Open-toe applique foot, and a darning foot with a spring in it
- Empty bobbins for your machine (as many as you have different thread colors for your fabrics)
- A Bobbin bolder (I like the Bobbin Saver ring)
- Schmetz Microtex sewing machine Needles, 80/12 size
- Glue Stick
- Small Applique glue
- Small pair of precision scissors (I like the Elan E6 scissors. I will have them for sale in class)
- The Ultimate Applique Resource Tool (C&T Publishing) - you can get it online, or let me know and I will bring them for sale
- Basic sewing kit

Fabric requirements on next page

Lab Fee: \$30 includes the things you will use in class (not unnecessary things).- a package of fusible web, a pencil, a needle for burying threads and the block pattern.



## FABRICS:



- One Fat quarter - or - half yard of background fabric

Most of the applique will take scraps of fabric, not yardage. Fat eighths are safe and you'll have some left

This is how my fabric selections break down:

- For the roses, I used four steps of Magenta from light to dark (the lightest being pink)
- I used three Greens for the stems and leaves. You will need a fat quarter of your darkest green for the large stem that makes the wreath. You'll also use more green than any other fabric, for all of the leaves and rosebuds
- Two Blues for the bird
- One Yellow for the dots
- A selection of Orange - light to dark
- Seven Purples - light to dark

You don't have to use the color selections that I did -- just remember to use a gradation of color when choosing your fabrics.

When you choose the fabrics for your applique, please keep in mind that applique looks the most beautiful when you use a gradation of color. That means that you choose a color, and add a grouping of fabric that blends from light to dark in several stages. Quilters use five steps of Value (the lightness and darkness of color): light, medium light, medium, medium dark and dark. That is how I choose all of the fabric for my quilts. If all of your fabrics are medium value, they will all blend and blur -- so you won't have any dimension or contrast in your piece. So, choose a color palette -- and then choose light to dark companion fabrics for your piece. Monochromatic prints or dyed fabrics are beautiful for this project. Zoom on the class sample photo so you can see what I chose. I used monochromatic prints and batiks. If you need help, you're welcome to send me photos of your fabric selections prior to class and I'll give you feedback.

You will need thread to match each of your applique fabrics. I use Aurifil 28 weight thread, which is a little thicker than 50 weight and has a beautiful sheen. I will have an assortment of those threads for sale in class. Sometimes one thread will work for two or more fabrics. Watch my YouTube video on how I choose threads for applique here:  
[https://www.youtube.com/watch?v=K\\_UvinV\\_xeU&t=2s](https://www.youtube.com/watch?v=K_UvinV_xeU&t=2s)



## Karen Styles

Hometown: Mitcham, Victoria, Australia  
Company: Somerset Patchwork & Quilting  
Website: [www.somersetpatchwork.com.au](http://www.somersetpatchwork.com.au)  
Email: [karen@somersetpatchwork.com.au](mailto:karen@somersetpatchwork.com.au)

I began my quilting journey over 20 years ago and started teaching not long after. From 2003-2017 I was the owner of Somerset Patchwork, a store in the suburbs of Melbourne, Australia, where I specialized in reproduction fabrics and traditional patchwork classes. These days I find myself travelling around the world sharing my knowledge and love every minute of it, I especially enjoy sharing my skills and modern techniques to make antique looking quilts.

I am a quilt designer, pattern writer and a fabric designer for Marcus Fabrics specializing in Reproduction fabrics from the 1800's.

I would call myself a traditional quilter, covering tried and true techniques, but, finding an easy and achievable way to make them!



## ROBIN'S NEST

Taught by  
**Karen Styles**

Email: [karen@somersetpatchwork.com.au](mailto:karen@somersetpatchwork.com.au)

**3 day class \$565.00**

**MONDAY, TUESDAY, WEDNESDAY**

### CLASS DESCRIPTION:

Traditional English Frame quilts like Robins Nest were a common layout design of quilts in The British Isles and Europe around the mid 1800's. The repetitive nature of the borders is soothing to the eye and this style of quilt is perfect for the scrap-aholics in all of us. This class will be a great way to learn new skills and enhance basic hand piecing knowledge including, six pointed stars, set in seams, EPP hexagons and fussy cutting applique.

Finished quilt measures approx. 70" x 70"

### SUPPLIES:

- ½" hexagon papers (EPP)
- template plastic
- marking tools including pencil, pen and frixon pen
- scissors to cut fabric and plastic/paper
- threads for applique to match and contrast
- applique needles
- basic sewing kit

### FABRICS:

- 5 yards background fabric
- 1 yard main feature fabric; this could be a repetitive floral or geometric design used for applique scallop border and fussy cutting
- 50 assorted fabrics to complement the feature fabric
- I have used amounts from fat ¼'s to ½ yards; include stripes, multi colour prints and designs to fussy cut in brown, red, blue and small amount of backgrounds and golds in shades of light, dark and medium
- 1 yard small border fabric (borders #5 & #7) includes binding

Lab Fee: \$25 includes a specialty template set.



## QUEEN ANN

Taught by  
**Karen Styles**

Email: [karen@somersetpatchwork.com.au](mailto:karen@somersetpatchwork.com.au)

**3 day class \$565.00**

**THURSDAY, FRIDAY, SATURDAY**

Inspired by English medallion style quilts from the 1800's, my quilt Queen Anne features a mixture of English Paper Piecing and applique. We will be exploring modern techniques to make a very traditional design. This class will be a great way to learn new skills and enhance basic knowledge including, English paper piecing, applique (using many different techniques both traditional and modern) finishing with machine piecing.

Finished quilt measures approx. 76" x 76"



### SUPPLIES:

- 2" clamshell papers (EPP)
- ½" hexagon papers (EPP)
- template plastic
- marking tools including pencil, pen and frixon pen
- scissors to cut fabric and plastic/paper
- threads for applique to match and contrast
- applique needles
- basic sewing kit

### FABRICS:

2 ½ yards background fabric

1 ½ yards main feature fabric, this could be a floral or larger design - I have used a darker background floral print for my feature fabric 1 yard small saw tooth applique border plus binding

60-70 assorted fabrics to complement the feature fabric

- I have used amounts from fat ¼'s to ½ yards; include stripes, multi colour prints and designs to fussy cut
- 20 brown, 20 shirting, 10 pink, 10 blue in shades of light dark medium

Lab Fee: \$30 includes a specialty EPP template and paper set.





## Jan Vaine

Hometown: Jacksonville, Florida

Website: [www.grahamcrackercollection.com](http://www.grahamcrackercollection.com)

Email: [vainej@netscape.net](mailto:vainej@netscape.net)

Author of 6 Books:



Jan Vaine is an accomplished needle artist whose elegant hand appliquéd quilts have appeared in quilt show and museum exhibits, magazines and books. She is a highly regarded educator with more than 25 years of teaching experience.

Born and raised in Pittsburgh, Pennsylvania, Jan has resided in Jacksonville, Florida for the past 40 years. Married to her husband of 36 years, they share their home with two dogs and two cats making every day a comic adventure.

Jan learned to stitch from her mom at the age of 5, and since then has continued to grow in her love of the needle arts, from garment construction, crochet, knitting, quilting, embroidery to appliqué.

Once an avid machine sewer, with her mom's help and continued encouragement Jan made her first quilt in 1983. She learned how to appliqué during her Dear Jane journey, and for the past 15 years Jan's passion has transitioned to hand appliqué and embroidery.

In 2004, she began her pattern design company to further share her passion and enthusiasm for needle arts. Named for a beloved family pet, the Graham Cracker Collection offers something for everyone who loves to sew, appliqué, embroider and quilt.

Jan has authored a number of quilting books and designed a series of quilt accessory patterns. Her works are often inspired by antique quilts and vintage embroidery. Blending old and new, Jan's designs offer a fresh new look. They reflect an appreciation for classic stitches, a high regard for vintage artistry, and an inspired use of modern techniques.

Jan is devoted to sharing the gentle art of handwork. She hopes appliqué and embroidery will remain relevant and relatable to today's quilter and enthusiastically embraced by future generations of needle artists.





## FLORAL URN - A Sampler of Embellishing Techniques

Taught by

**Jan Vaine**

Email: [vainej@netscape.net](mailto:vainej@netscape.net)

**3 DAY CLASS \$565.00**  
**MONDAY, TUESDAY, WEDNESDAY**

Note: During class, you may choose to work on your block, in your workbook only, or a combination of both.

**CLASS DESCRIPTION:** Jan hit the refresh button on one of her original Art of Elegant Hand Embroidery designs to create this Floral Urn block specifically for the Academy of Applique. Her inspiration came from a painting in the manner of Jan van Huysum, a Dutch artist c. 1682-1749, who was known by his contemporaries as "the phoenix of all flower painters."

This newly designed Floral Urn is filled with delicate touches of embroidery and ribbon work, all of which can be used to turn any appliqué block or quilt into works of art. Several of the techniques are new additions to Jan's classes.

Jan presents her class in a workbook format, stitching samples of each technique in threads and ribbons supplied in the class kit. You will leave with a wonderful reference book with samples to inspire your stitching. You'll definitely want to add the stitching techniques this class offers to your needlework repertoire!

### **SUPPLIES:** (FABRIC Requirements on Following Page)

- 1-1/2" three-ring binder
- 30 - 8-1/2" x 11" sheet protector pages, placed in binder

#### Threads:

- Applique thread to match vase fabric
- Spool of neutral colored #50 cotton thread (color that blends with most colors)
- Skein of Perle cotton #5, any color, for learning sample stitches

#### Needles:

- Your favorite appliqué needle
- Variety pack of Chenille needles, #18/24
- Variety pack of Embroidery/Crewel needles, #3/9
- Variety pack of Beading needles, #10/13
- Variety pack of Milliners or Straw needles, #3/12
- Variety pack of Tapestry needles #18/22

- Sharps needles #9

Sharp embroidery scissors

5" embroidery hoop (highly recommend Morgan Hoops) Portable light and extension cord

Marking Pencil

Bodkin

Professional Combo Circle Template by

Staedtler Thimble (Optional)

Lab Fee: \$40.00 includes Floral Urn pattern, workbook pages, vase template, sample threads and ribbons, crinoline, beads

**FABRICS:**

- 30 - 8" x 10" pieces of muslin for sample pages
- 1 - 6" x 6" piece of fabric for vase. You may want to bring several larger pieces if you would like to audition fabric using the vase template that will be supplied in the class kit.
- 1 - 10" x 10" square for Travelers Joy flowers (the 4-petalled flower on the right of the vase)

- 

For background:

- 1 - 16" x 16" background square
- 1 - 16" x 16" piece of batting
- 1 - 16" x 16" piece of muslin

Prior to class, sandwich the above three pieces together and quilt as desired.



## GRAPE WREATH AND CHALICE A Stumpwork Sampler

Taught by  
**Jan Vaine**

Email: [vainej@netscape.net](mailto:vainej@netscape.net)

**3 DAY CLASS \$565.00**  
**THURSDAY, FRIDAY, SATURDAY**

Note: During class, you may choose to work on your block, in your workbook only, or a combination of both.

**CLASS DESCRIPTION:** Jan hit the refresh button on another of her original Art of Elegant Hand Embroidery designs to create this Grape Wreath & Chalice block specifically for the Academy of Applique.

This newly designed Grape Wreath & Chalice block is a study in stumpwork techniques, also known as surface embroidery. The leaves and grapes were stitched individually off block, each with a unique embellished technique.

As for the grape clusters, there are lots of ways to make circles for grapes, and Jan will share several of her favorite methods.

Jan presents her class in a workbook format, stitching samples of each technique in threads and ribbons supplied in the class kit. You will leave with a wonderful reference book with samples to inspire your stitching. Whether cotton or wool appliqué, these hand embroidery techniques will become your paintbrush for adding delicate details to your needlework.

### **SUPPLIES:** (FABRIC Requirements on Following Page)

1-1/2" three-ring binder

30 - 8-1/2" x 11" sheet protector pages, placed in binder

Threads:

- Applique thread to match chalice fabric
- Spool of neutral colored #50 cotton thread (color that blends with most colors)
- Skein of Perle cotton #5, any color, for learning sample stitches

Needles:

- Your favorite appliqué needle
- Variety pack of Chenille needles, #18/24
- Variety pack of Embroidery/Crewel needles, #3/9
- Variety pack of Beading needles, #10/13
- Variety pack of Milliners or Straw needles, #3/12
- Variety pack of Tapestry needles #18/22
- Sharps needles #9

Sharp embroidery scissors, Marking pencil, Portable Light, Extension Cord

5" embroidery hoop (highly recommend Morgan Hoops)\*

Professional Combo Circle Template by Staedtler (available in office supply stores), thimble\* (optional)

Lab Fee: \$40.00 includes Grape Wreath & Chalice pattern, workbook pages, Chalice template, sample threads and ribbons, and notions for sampling the techniques Jan used in her block.

Academy of Applique

105 Stavenger Ct. Williamsburg, VA 23188

Ph: 757-565-5299

email: [barbara@academyofapplique.com](mailto:barbara@academyofapplique.com)

**FABRICS:**

- 30 - 8" x 10" pieces of muslin for sample pages
- 1 - 6" x 6" piece of fabric for chalice. You may want to bring several larger pieces if you would like to audition fabric using the chalice template that will be supplied in the class kit.
- 24 - 4" x 4" pieces of fabric OR 12 - 4" x 4 pieces of wool OR a combination of fabric and wool for leaves
- Package of Misty Fuse
- For background:
  - 1 - 16" x 16" background square
  - 1 - 16" x 16" piece of batting
  - 1 - 16" x 16" piece of muslin

Prior to class, sandwich the above three pieces together and quilt as desired.



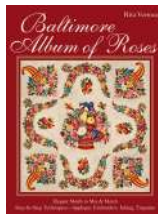
## Rita Verroca

Hometown: Colonial Beach, Virginia

Website: [www.ritaverrocaquilts.com](http://www.ritaverrocaquilts.com)

Email: [ritaverroca@yahoo.com](mailto:ritaverroca@yahoo.com)

Author of 1 book:



Rita Verroca is an award-winning quilter whose quilts have been exhibited in the USA, Europe and Japan. Her quilts have been on the cover of magazines and have been featured in calendars and quilt books. She has won awards in international competitions and shows.

Rita is a passionate teacher with great skill and contagious enthusiasm. In her quilts she combines old heritage quilt patterns with delightful and playful arrangements. Her choice of color is artfully chosen and arranged to give the overall design a stimulating balance of a harmonious picture.

Rita receives a lot of requests for her patterns and with this website would like to take the opportunity to invite you to share her passion for quilting.





## FREEDOM'S FLAG OR MOUNT VERNON

Taught by  
**Rita Verroca**  
Email: [ritaverroca@yahoo.com](mailto:ritaverroca@yahoo.com)

**3 Day Class \$565.00**  
**MONDAY, TUESDAY, WEDNESDAY**

### CLASS DESCRIPTION:

Patriotism is the feeling of love, devotion and sense of attachment to a homeland and alliance with other citizens who share the same sentiment. What better way to celebrate and chronicle your love of country than to stitch a patriotic album block and capture the sentiment with magical threads. Both designs offered in this class are magnificently rendered in cloth and you are invited to pick one of two block offerings to stimulate your creativity and challenge your needle skills at the intermediate level. How to pick? Perhaps some background on the design will help.

#### Freedom's Flag

Historic patterns tie us to the quilt makers from long ago and without their examples we would not have been able to continue this uniquely American art form. In recreating this patriotic block you will have the opportunity to stitch and celebrate American history, acknowledge the strength of the eagle and salute the American flag, surmounted by the 'cap of liberty'. Graceful flower garlands and stars adorn this happy design and you might catch yourself cheering in the process: 'Huzzah for freedom'.

**SUPPLY LIST and FABRIC REQUIREMENTS please see subsequent page.**

#### Mount Vernon

Mount Vernon was the plantation of George Washington, the first President of the United States, and his wife, Martha Washington. Originally called 'Little Hunting Creek Plantation' it is ten times the size of the average home in colonial Virginia and one of the most iconic 18th century homes in America. George Washington was a unifying force during and after the revolutionary war. It was the courage of his conviction and his willingness to serve that made people want to follow him and thereby successfully achieve America's freedom. Mount Vernon was his sanctuary and he lovingly worked and improved on it all his life and with stitching this block you are cordially invited to take a ride in the carriage and visit this American landmark.

Both blocks will be revisiting all needle- turn appliqué skills like basic stitch, pointy leaves, inverted V's and Valley's to assure your success to stitch a piece of history for your Baltimore Album Quilt. Rita will be your personal guide as you travel towards new horizons in appliqué.

Lab Fee: \$25.00 includes pattern, enlarged pattern for fabric placement and printed pattern templates  
Kit Fee includes background: \$55 - Freedom's Flag; \$75 - Mount Vernon  
Please email Rita to order kits at [ritaverroca@yahoo.com](mailto:ritaverroca@yahoo.com) by January, 2020



## **BIRD OF PARADISE OR MELODIES OF LOVE**

Taught by  
**Rita Verroca**

Email: [ritaverroca@yahoo.com](mailto:ritaverroca@yahoo.com)

**3 Day Class \$565.00  
THURSDAY, FRIDAY, SATURDAY**

### **CLASS DESCRIPTION:**

It is easy to admire and fall in love with Baltimore Album Quilts. Widely celebrated as the highest form of American Quilting they were and still are optimistic, warm hearted gifts of respect, admiration and love and demonstrate without further ado, that Appliqué is Queen. What better place, than here at the Academy to carry forth this stunning tradition and stitch a piece of everlasting beauty and sentiment for yourself.

You are cordially invited to indulge in their magic by choosing one of two of Rita's glorious designs.

### **Bird of Paradise**

The Victorians assigned symbolism to many things and birds held a nuanced and precise meaning. Swallows were thought to lead ships home, doves carried the meaning of hope and peace, an eagle represented nobility, strength, courage, wisdom and power and love birds signified faithfulness, eternal love and marriage, to name a few. The bird of paradise was another popular image, because its feathers were a sought after item for Victorian fashion, expressing wealth and status. Join Rita in stitching this exquisite block and create your own exotic plumage.

**SUPPLY LIST and FABRIC REQUIREMENTS** please see subsequent page.

### **Melodies of Love**

A block depicted in several historic Baltimore Album Quilts was the inspiration for this stunning version of its predecessor, a block with romantic overtones, with a heart, music and arrows, symbolizing romantic love amid fronds of graceful flowers. The traditional, instrumental love songs of the era were performed by a hammered guitar, violin, bass, flute and harp and we might ponder upon our own love and love for music as we stitch this block into our Baltimore Album Quilt.

Needle and thread are all you will need to needle turn these beautiful blocks. Rita will practice with you how to make small invisible stitches, smooth curves, sharp points, fray-less V's and U's to expand and enrich your own exquisite needlework and appliqué skills. Come and join Rita's exciting, innovative class innovation on tradition!

Lab Fee: \$25.00 includes pattern, enlarged pattern for fabric placement and printed pattern templates  
Kit Fee includes background: \$55 - for either Bird of Paradise or Melodies of Love  
Please email Rita to order kits at [ritaverroca@yahoo.com](mailto:ritaverroca@yahoo.com) by January, 2020

**Supply List:**

- Appliqué needles, size 10 and/or 11
- Threads to match fabric ( I prefer DMC cotton, Aurifil and Mettler 60 silk finish)
- Small applique scissors and paper scissors to cut laminated patterns
- Thimble
- Silk glass pins
- Pigma pen Micron 005 and .01 in light brown and black
- Personal sewing lamp and extension cord
- Glue stick
- Clover water soluble marker to mark background fabric or marking pen of your choice
- Clover eraser pens
- 4 inch ruler
- Cutting mat to stitch on (optional)

**Rita will have these supplies available for sale in class in case you have trouble locating these items.**

**Fabric:**

- One piece of 21” plain or printed cotton fabric or any other background fabric of your choice for 18” block
- Lots of small pieces of fabric in various colors for flowers, laves, stems and buds to match the image of your personal preference



## Wendy Westlake

Hometown: Calgary, Alberta Canada

Email: [wendywestlake@gmail.com](mailto:wendywestlake@gmail.com)

Wendy Westlake grew up in Calgary, Alberta an oil and gas town. She was the fifth child out of six sisters, and had to share everything. As a child her great grandmother made her a quilt using old aprons,, shirts and any material that was available. Nothing ever went to waste. That quilt laid on her bed as she grew up. It was something that was made just for her and it made her feel truly special. Wendy cherishes her grandmothers quilt and still has to this day.

Wendy's background is in the Oil and Gas industry which she has been involved in for forty years. As a business woman she worked hard and always strived to be the best. Working in such a demanding industry taught her to be resilient and work hard.

A working professional here is Calgary, Wendy was not content with a just a nine-to-five job. As an artist and a craftswoman she is was an award winning doll maker. She travelled all over the world showcasing her talent. Her passion for quilting has been a wonderful journey.

In 1999 she discovered fabric, ribbons, threads (OMG! Who knew there was so many types of thread!)

Wendy Westlake has been quilting for about 18 years with a strong influences in Hand appliqué as well as embellishment (i.e. use of silk ribbon, threads, beads).

She fell in love with Baltimore Quilting about 15 years ago after meeting Elly Sienkiewicz. Elly came to Calgary to teach. Wendy jumped at the opportunity and signed up for her class immediately. To say the least, it was truly life-changing. Wendy's entire focus and enthusiasm changed. She began to see quilting in a very different way. She went from sewing together squares of fabric to three dimensional flowers, baskets and so much more. Gardening is one of her true loves and Baltimore quilting has allowed Wendy to combine her love of flowers, birds and bees with fabric.

Wendy has used many methods of appliqué and chose the back basting method for many years and she still regularly uses this technique. 12 years ago, she was introduced to the prepared edge appliqué and has taken classes with Barbara Carper and continues to hone her skills to this day.

Wendy Westlake is a continuous student of the craft and will never stop learning. She loves the collaborative approach and being able to impart what she has learned to others, embodies the true meaning of quilting. As her journey continues, she loves to share her passion for the art of fabric.



## **BEE SKEP (And Large Bee Kit)**

Taught by  
**Wendy Westlake**  
Email: [wendywestlake@gmail.com](mailto:wendywestlake@gmail.com)

**3 DAY CLASS \$565.00  
MONDAY, TUESDAY, WEDNESDAY**



### **CLASS DESCRIPTION:**

#### **SUPPLIES:** (FABRIC Requirements on Following Page)

- Firm pressing surface - a small cutting board works very well.
- Stiletto
- Brush for starch
- Spray starch and small container to hold starch
- 01, 3 micron pen in black
- 01, 3 micron pen in brown
- Needles #10 sharp and #11 embroidery
- Scissors for paper
- Sharp to the point scissors (i.e. Karen K. Buckley)
- Embroidery hoop 5-6"
- Basic sewing kit (i.e. thimble, threader, thread heaven etc.)
- Light (Ott or similar)
- Clover Iron

#### **Embroidery**

- All of your bees will be stitched using cotton and metallic thread.
  - The fuzzy bodies are done in turkey-work. (Ghiordies knots)
  - Organza wings are stitched down using metallic thread using a straight stitch.
- \*\*I will have a special combs available for creating the lovely fuzzy bodies of the bees. (\$10.00 each)**

There are some wonderful books available on technique if interested.

- "Simply Successful Appliqué" by Jeanne Sullivan for prepared edges and techniques
- "A to Z" books for Embroidery
- Art of Elegant Hand Embroidery by Janice Vaine
- There are lots of videos on YouTube as well

**LAB FEE:** \$20.00 includes metallic floss for bees, bee skep fabric (I will bring a variety of fabric to choose from), 55 large freezer paper hexagons, 35 small freezer paper hexagons, 15 leaves cut from freezer paper, Bee Skep pattern on freezer paper, floss for bees, organza for wings, and pattern



**FABRIC:**

- Background of your choice 20" X 24"
- 4 - 1" strips width of fabric (wf) for your zinger
- 4 - 2 1/2" strips wf for sashing
- 3 - 2" strips wf for honeycomb (hexagons)
- 20 - 2" square cut from misc. fabric for honeycomb (hexagons) \*\* I have included fabric for Bee Skep.
- 36 - 2" squares of misc. fabric for flowers. \*\* Please be sure that you cut 6 for outside petals and 1 for the centre.
- Backing 25" X 30" piece of fabric
- Batting 25" X 30"
- Binding 1/3 yard/meter
- Thread of your choice for appliqué, silk or cotton

**LARGE BEE WITH EMBROIDERED BRANCHES**

For anyone that is interested in stitching this beautiful bee, kits will be available for \$25.00 during the class.

All you need is a basic sewing kit and a 6" hoop that you will already have for your class. This kit is complete with background, wing material, ribbon and all floss required for branches and bee.

If you are interested in the large bee kit, please let me know before December 31 2019.



## **Teri Young and Kara Mason**

Company: Through the Needle's Eye LLC

Website: [www.needleseystories.com](http://www.needleseystories.com)

Blog: [www.needleseystories.blogspot.com](http://www.needleseystories.blogspot.com)

Email: [needleseyetk@gmail.com](mailto:needleseyetk@gmail.com)

Teri Young and Kara Mason have been stitching partners for nearly 20 years. They feel honored to have had their original Baltimore Album-style quilt, A Fairy Tale Album, hanging in exhibits in Houston, Chicago, England, and Virginia. Kara and Teri began teaching at local quilt shops in 2014, focusing on appliqué, embroidery, and ribbon work. They have lectured at guilds internationally, taught a series of workshops for the Baltimore Appliqué Society, have been teaching at the Academy of Appliqué in Williamsburg, Virginia, for the past three years, and are thrilled to add Baltimore on the Prairie to the list. Among their most recent quilt designs include In the Garden, Lovely Botanicals, and their newest project, Woodland Reverie, which will be introduced soon. Their partnership adventures continue across two continents, as Kara is living in Germany for the next couple years. Technology is a great asset when designing together from across an ocean! Stories of their adventures are chronicled on their weekly blog, Telling Stories Through the Needle's Eye.



## WOODLAND REVERIE (Autumn or Spring)

Taught by  
Teri Young and Kara Mason  
Email: [needleseyetk@gmail.com](mailto:needleseyetk@gmail.com)

**3 Day Class \$565.00**  
**MONDAY, TUESDAY, WEDNESDAY**



**CLASS DESCRIPTION:** Join us on our adventure into nature's wonderland! We are introducing our new quilt, Woodland Reverie, with two different blocks from which to choose. All skills for both blocks will be covered—and many overlap—so you will be able to add many techniques to your stitching toolbox. Multiple methods of appliqué will be taught, along with stumpwork, ribbon work, and embroidery. We will play with exciting new fibers and techniques to help you bring life to these dimensional woodland blocks. Will you choose the autumnal acorn wreath or the springtime swags—a light background or a dark one. Or maybe you'll feel inspired to tackle both on your way to creating the entire quilt!

### **Lab Fee:** (\$35):

**Spring kit** includes: Hand-dyed velvet to create dimensional pussy willows, French wired ribbon for dogwood flowers, 7mm silk ribbon for flowers and vine leaves, 4mm silk ribbon for grape hyacinths, 1 package Painters Threads 2mm silk ribbon, crinoline, all special threads for nest (wool thread, Thread Gatherers Sea Grass and Oriental Linen, and Painters Threads Shimmer), full-sized pattern, detailed handout

**Fall kit** includes: Hand-dyed velvet for mushroom caps, French wired ribbon for flowers, teadied silk thread for vine, 1 package Painters Threads pearl cotton for acorn caps, 1 package Painters Threads Shimmer for mushroom caps, hand-felted wool roving for the moss, full-sized pattern, detailed handout.

**SUPPLIES:**

Basic sewing supplies needed:

- Thread for appliqué (fine cotton, silk, or poly—we use Aurafil 50 or 80 wt cotton or Invisafil 100 wt)
- Strong thread for ruching and basting (40-50 wt cotton or polyester)
- Needles: appliqué, #22 chenille, large milliners needles (size 1 or 3)
- Scissors: sharp embroidery scissors, paper scissors, and junk scissors for cutting wired ribbon
- Straight pins
- Sewline Trio (or your favorite marking pencil)
- Tweezers
- Small ruler
- Small hoop

**FABRIC:****SPRING BLOCK:**

- o Background fabric of your choice: 18-inch square
- o Greens and browns for leaves and twigs
- o 8" square for nest
- o Brown, orange, white scraps for bird
- o Blue (or tan) for eggs

- **Embroidery threads** of choice—we used:

- o Yellow and orange floss for flower centers,  
Green floss for vines
- o Green pearl cotton for hyacinth stems
- o Black and white floss for bird's eye, gray wool and dark brown floss for feathers, and  
dark gray floss for claws and beak

**AUTUMN BLOCK:**

- o Background fabric of your choice: 18-inch square
- o Assorted greens for split leaves
- o Two browns or greens for bias stems

§ Stems are ¼" wide and you need 44" of bias strips for each color - you are welcome to bring them premade to class

- o Three beige fabrics from light to dark for mushroom stems
- o Tan or gold for acorns
- o Butterfly fabric (we used dupioni silk)

- **Embroidery threads** of choice—we used:

- o Green pearl cotton for moss
- o Black and orange floss for butterfly wings, and orange and teal pearl cotton for  
butterfly body

**Note: a variety of threads will be available for purchase**

## EXTRA CURRICULAR ACTIVITIES

### **MID ATLANTIC QUILT SHOW – Sunday, March 1, 2020 – Bus leaves Kingsmill at 9:15 a.m.**

Breakfast is available Sunday morning (at your expense) just off the lobby.

Enjoy a stress free ride to and from the Mancusso Mid Atlantic Quilt Show in Hampton, VA, with fellow Academy attendees. Fee: \$55.00 (includes entrance fee to Show)

### **TEACHERS IN THE ROUND - Sunday, March 1, 2020 5:00 - 6:30 p.m.**

Won't you join us for this fun filled "taste" of new teachers and techniques in a spirited "round robin" style of learning and sharing. Fee: \$40.00

### **TASTE OF WILLIAMSBURG:**

Please join us for dinner as we visit a different local restaurant each evening. Meet fellow appliquers and enjoy some local cuisine. Restaurants will be posted daily during the Academy. Transportation provided. Fee: Dutch Treat

### **MUSEUMS OF COLONIAL WILLIAMSBURG – Wednesday, March 4, 2020 - 2:00 p.m. – 3:30 p.m.**

The Academy has a wonderful opportunity coordinated with the Museums of Colonial Williamsburg. We will have the opportunity to have hosted access to the storage facility of quilts (not currently on display), and will be able to see antique appliqué quilts "up close and personal." Additionally we will be treated to a short talk by the Curator on how they appraise donated quilts, and what they look for in museum quality quilts. Fee: \$35.00

### **"LET'S BROWN BAG IT" GIFT GIVING EXCHANGE – Wednesday, March 4, 2020 5:00 p.m.**

We have changed up the traditional Wednesday evening game, a bit. If you haven't had a chance to play us before, now is your chance. Bring a gift any quilter would love to receive, put it in a brown lunch bag (we will have plenty of bags available), and come join us. I GUARANTEE that your cheeks will be sore from laughing at the end of this game. All in good fun! Fee: Free

### **SHOW AND SHARE – Tuesday, March 3, 2020 and Friday, March 6, 2020 – 5:00 p.m.**

Please bring (1) or (2) items to show – we are all inspired by each others' work; or be part of the "audience" offering "oohs" and "aahs." Fee: Free

### **FAREWELL BREAKFAST – Sunday, March 9, 2020 7:30a.m. - 9:00a.m.**

Tired from a week of appliquéing, learning and laughing, we say our final good-byes at a Farewell Breakfast at the conference center. Hugs and kisses abound, and sorrowful "Goodbyes" until next year. Fee: Self Pay